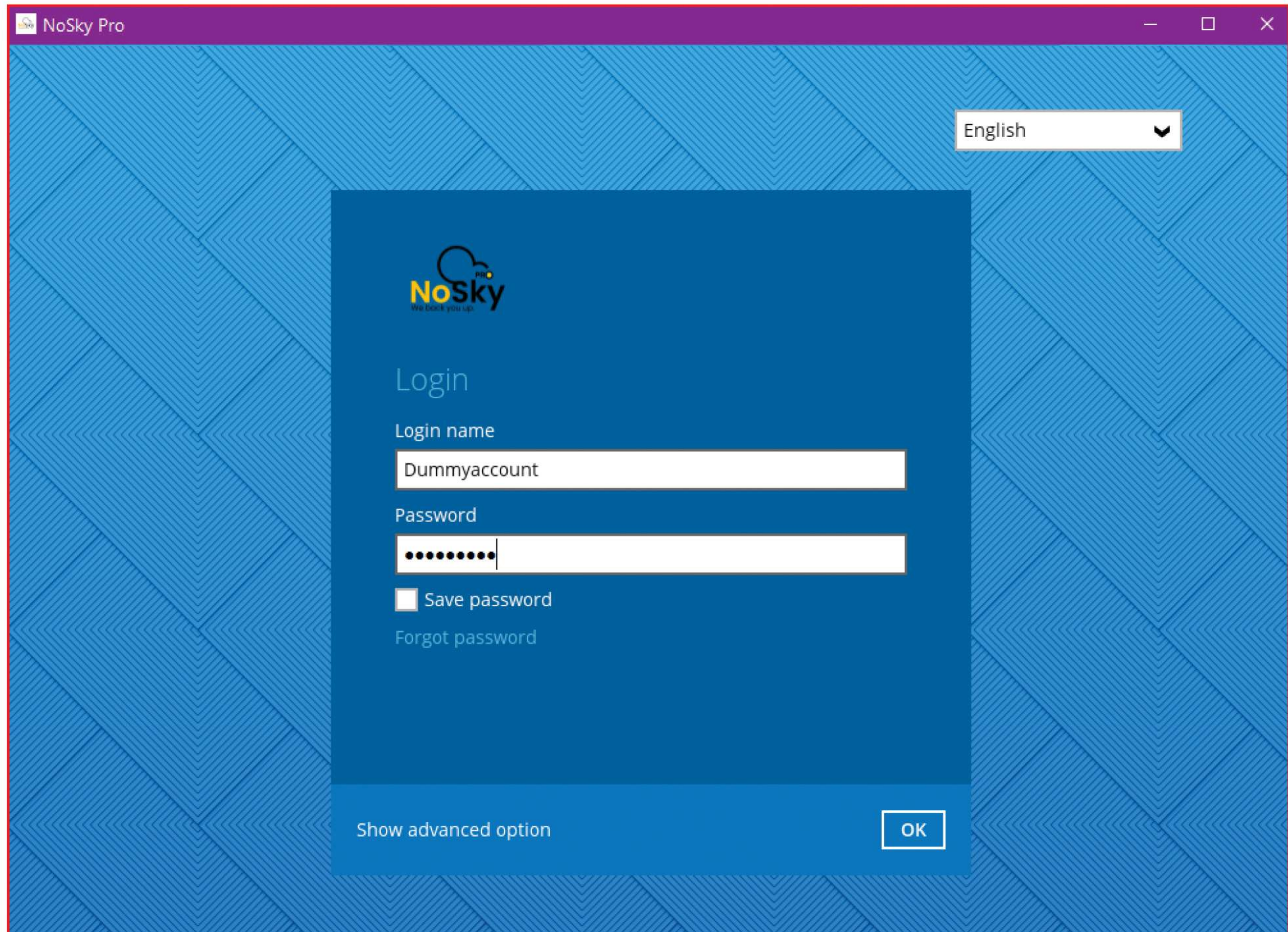
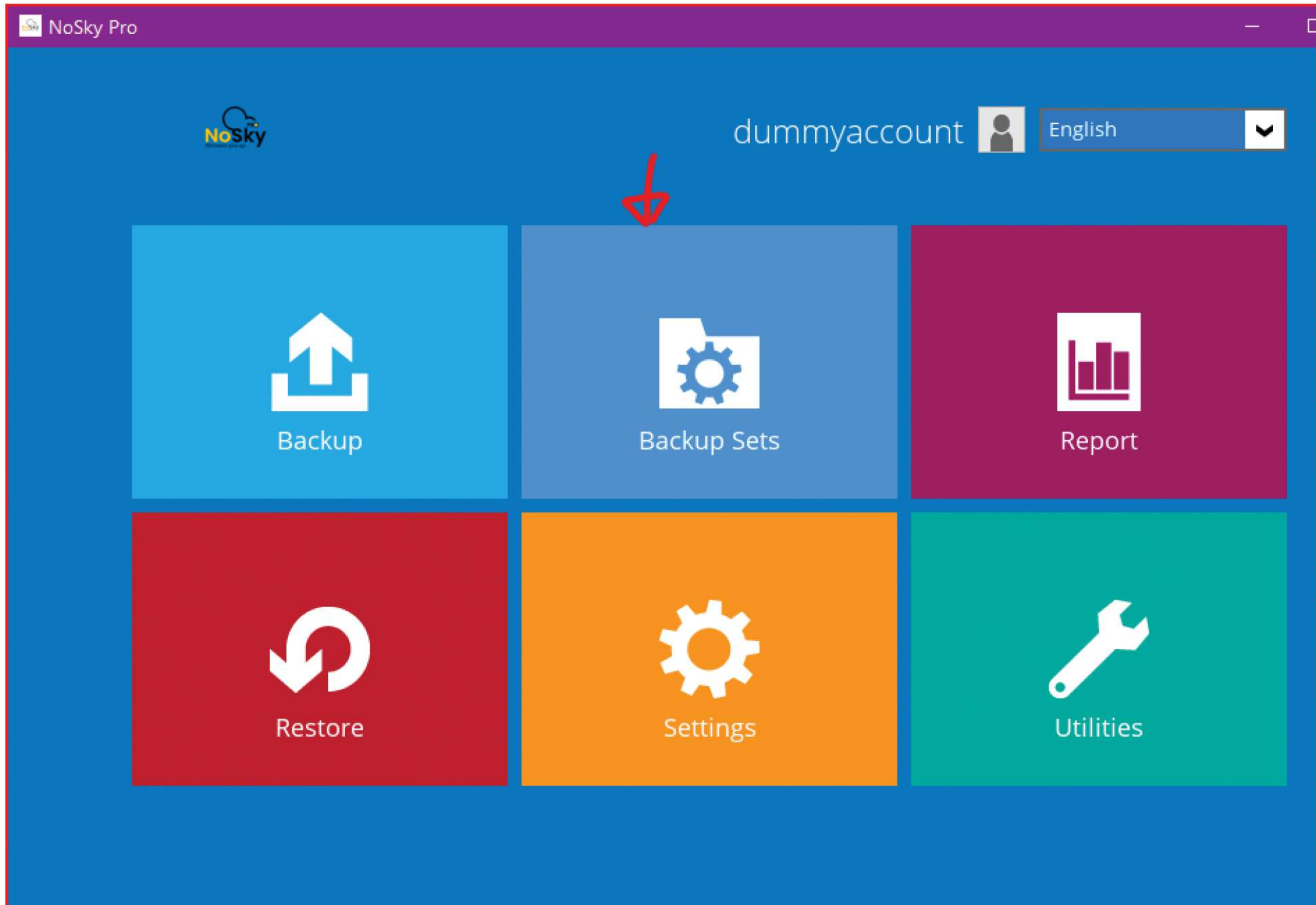


Open NoSky application > Login using your Username & password.

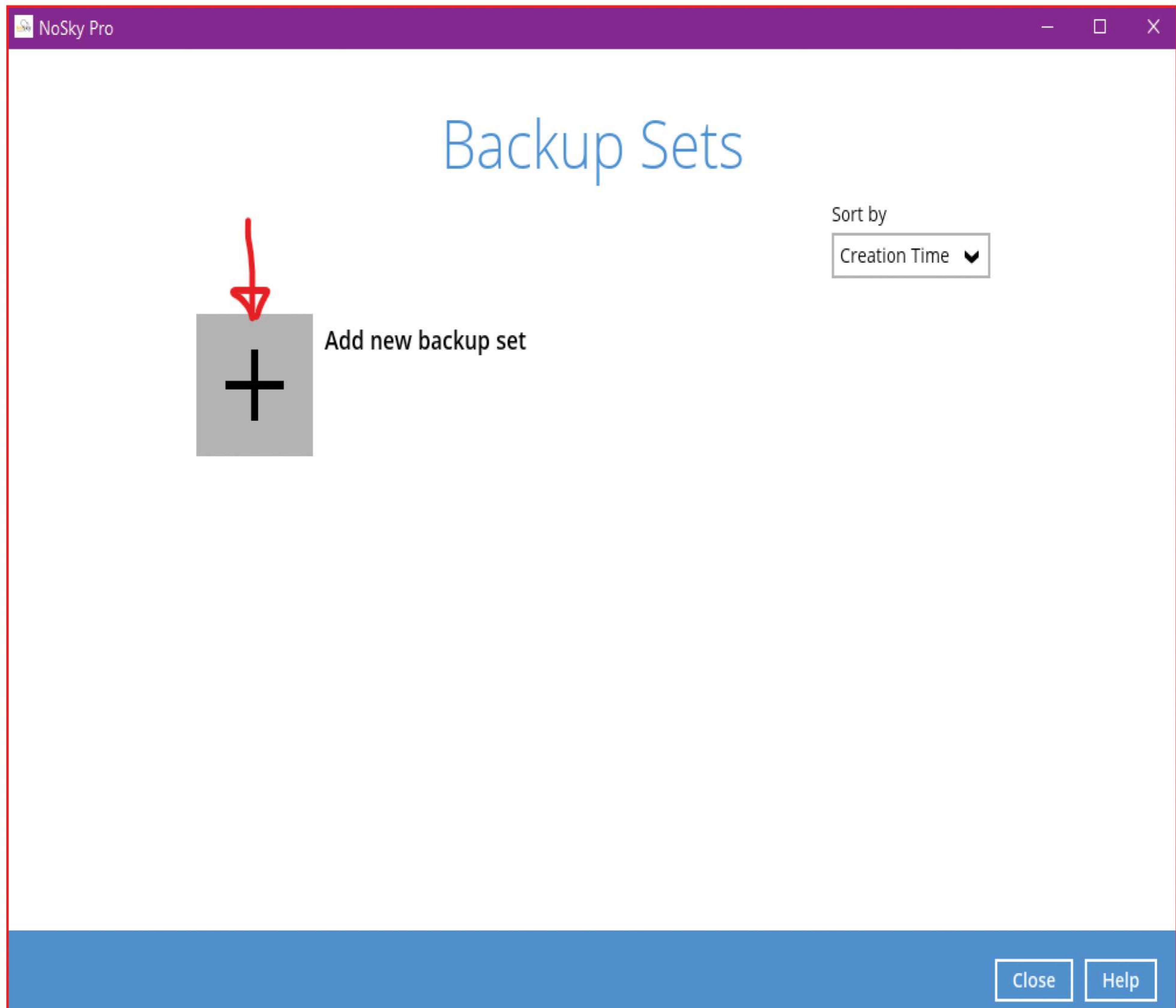


The screenshot shows the NoSky Pro application window. The title bar reads "NoSky Pro". In the top right corner, there is a language dropdown menu set to "English". The main content area has a blue background with a repeating geometric pattern. A central white login form contains the NoSky logo at the top, followed by the heading "Login". Below the heading are two input fields: "Login name" with the text "Dummyaccount" and "Password" with masked characters. There is a "Save password" checkbox which is currently unchecked, and a "Forgot password" link. At the bottom of the form, there is a "Show advanced option" link and an "OK" button.

Click on Backup Sets




Click on + symbol to add a new set.



Enter name for your Backupset > Next


NoSky Pro

Create Backup Set

Name 

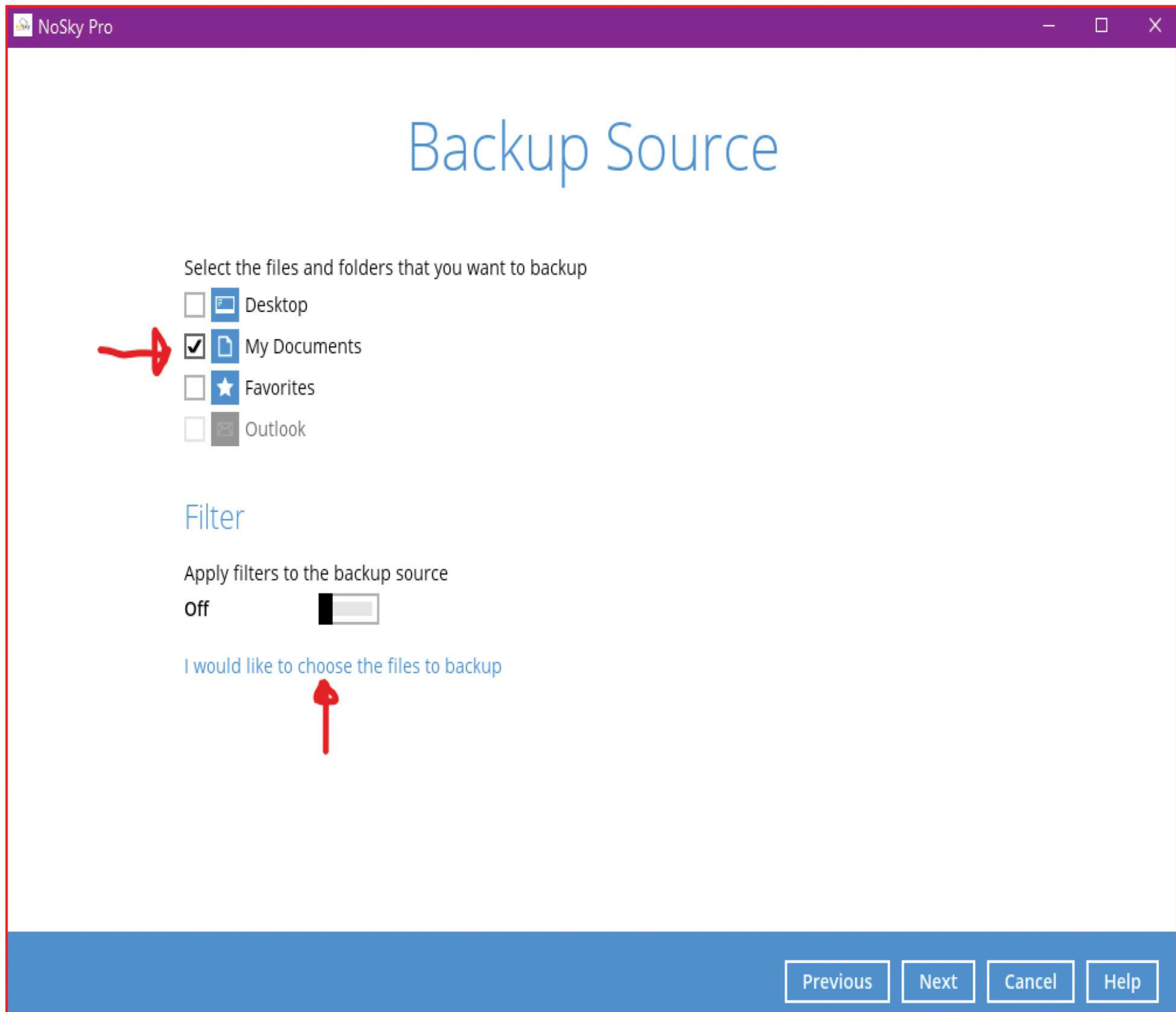
MY CLOUD BACKUP

Backup set type

 File Backup

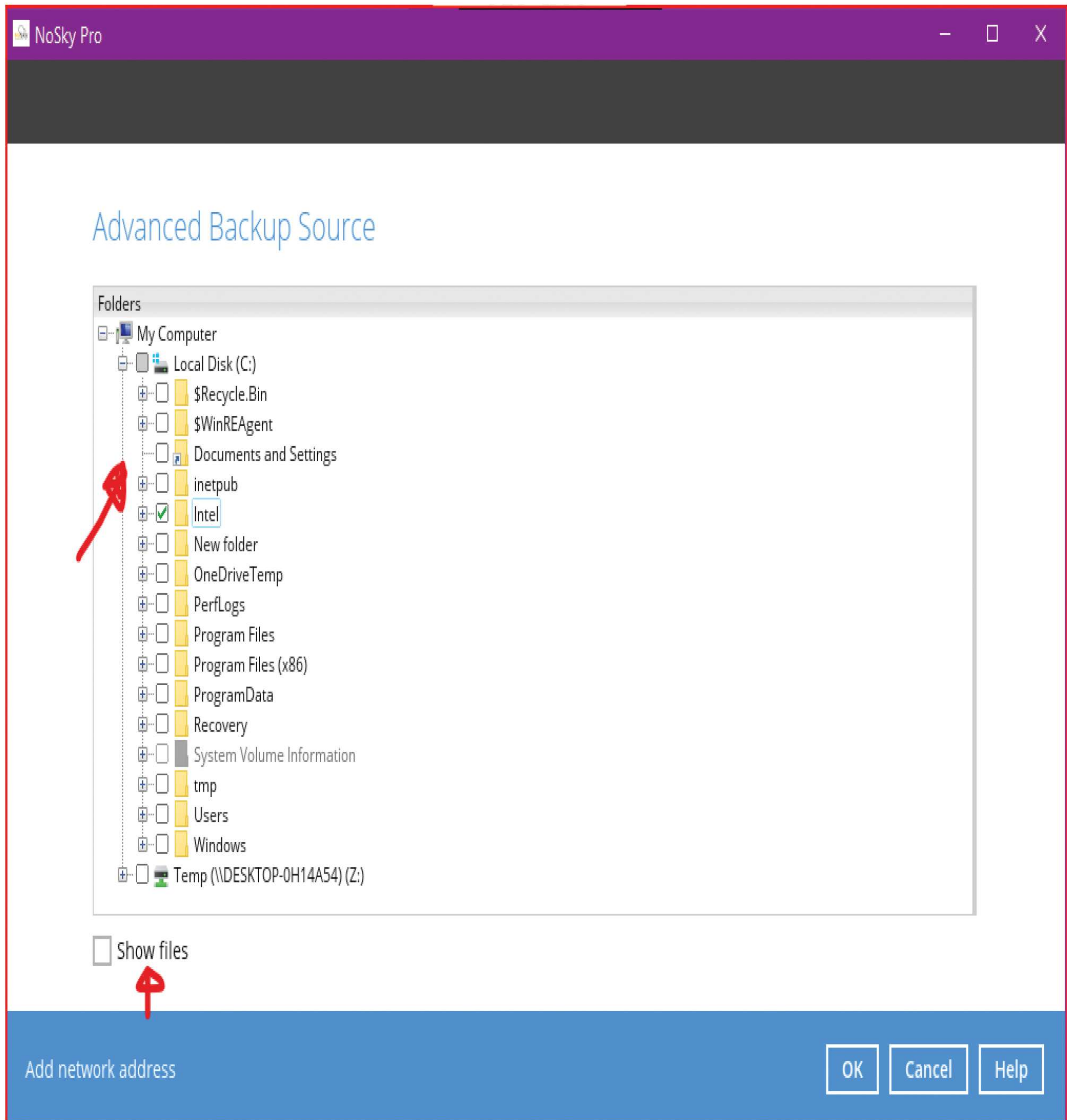
Next Cancel Help

Click Choose the files, Uncheck My documents if not required

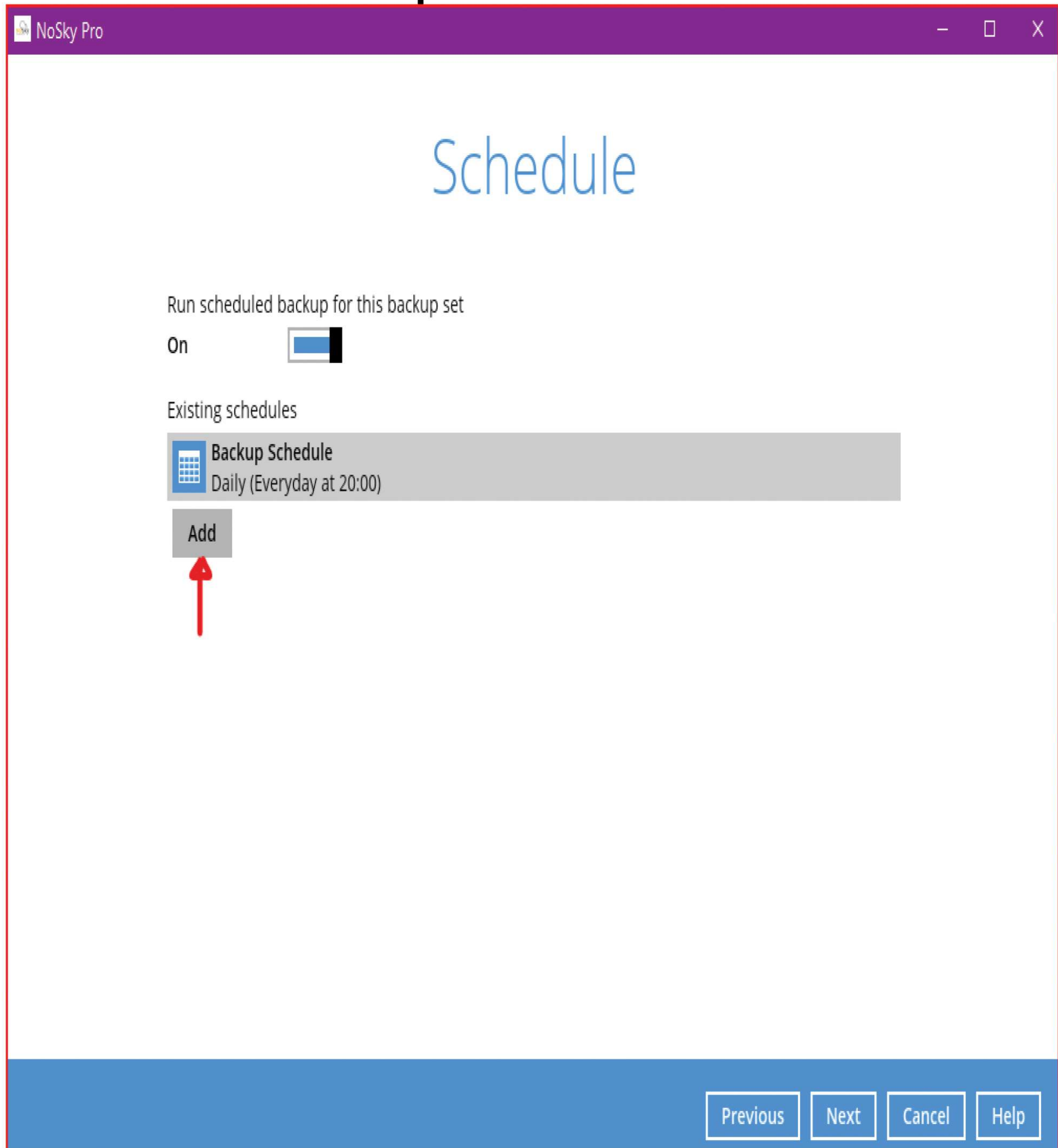


Select the data you want to backup > Click OK > Click

Next

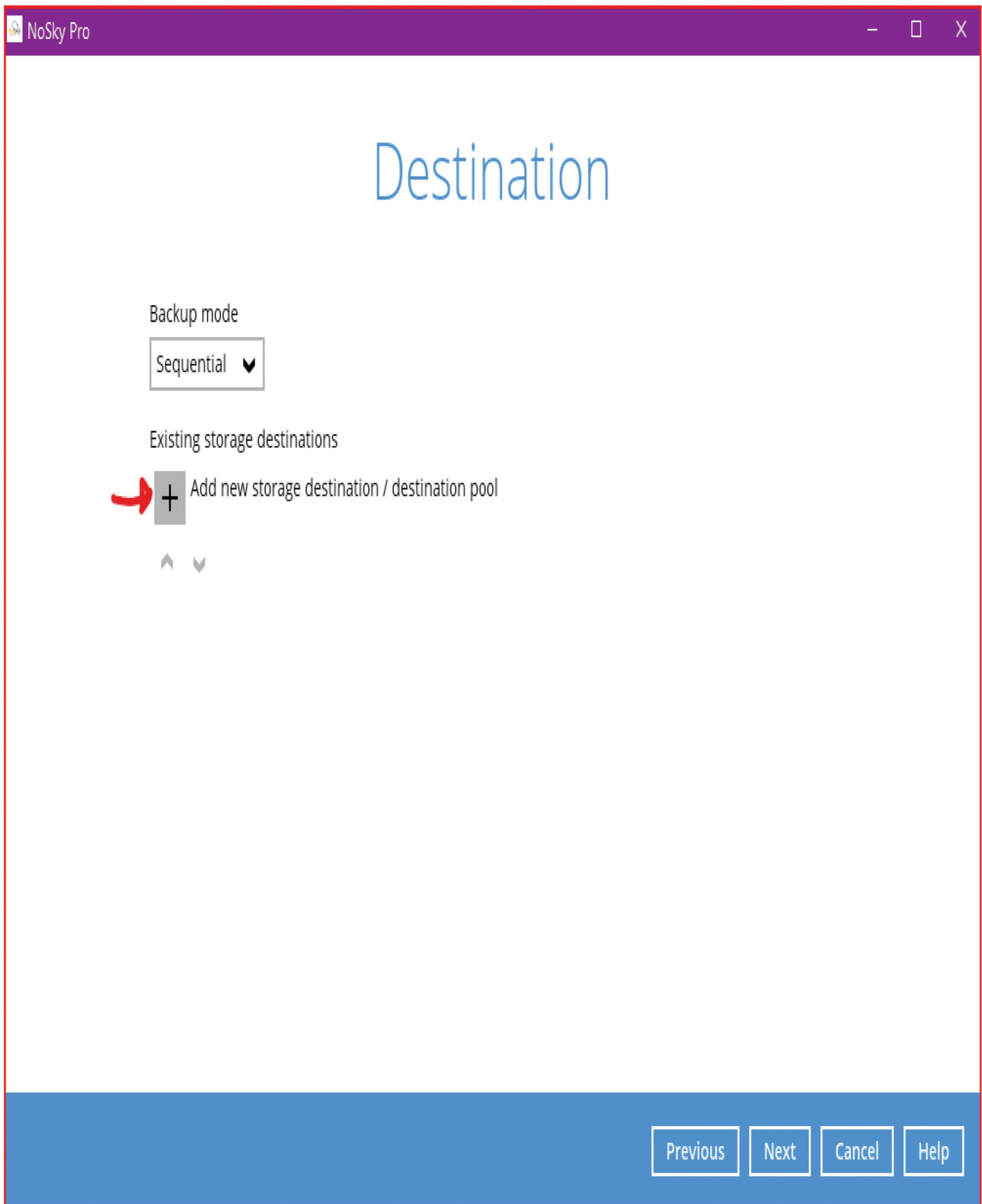


Click Backup Schedule to set Backup time, Add as many as required > Click Next



Click + to add storage destination- AWS/Wasabi/Local >

Click Next.



NoSky Pro

New Storage Destination / Destination Pool

Name

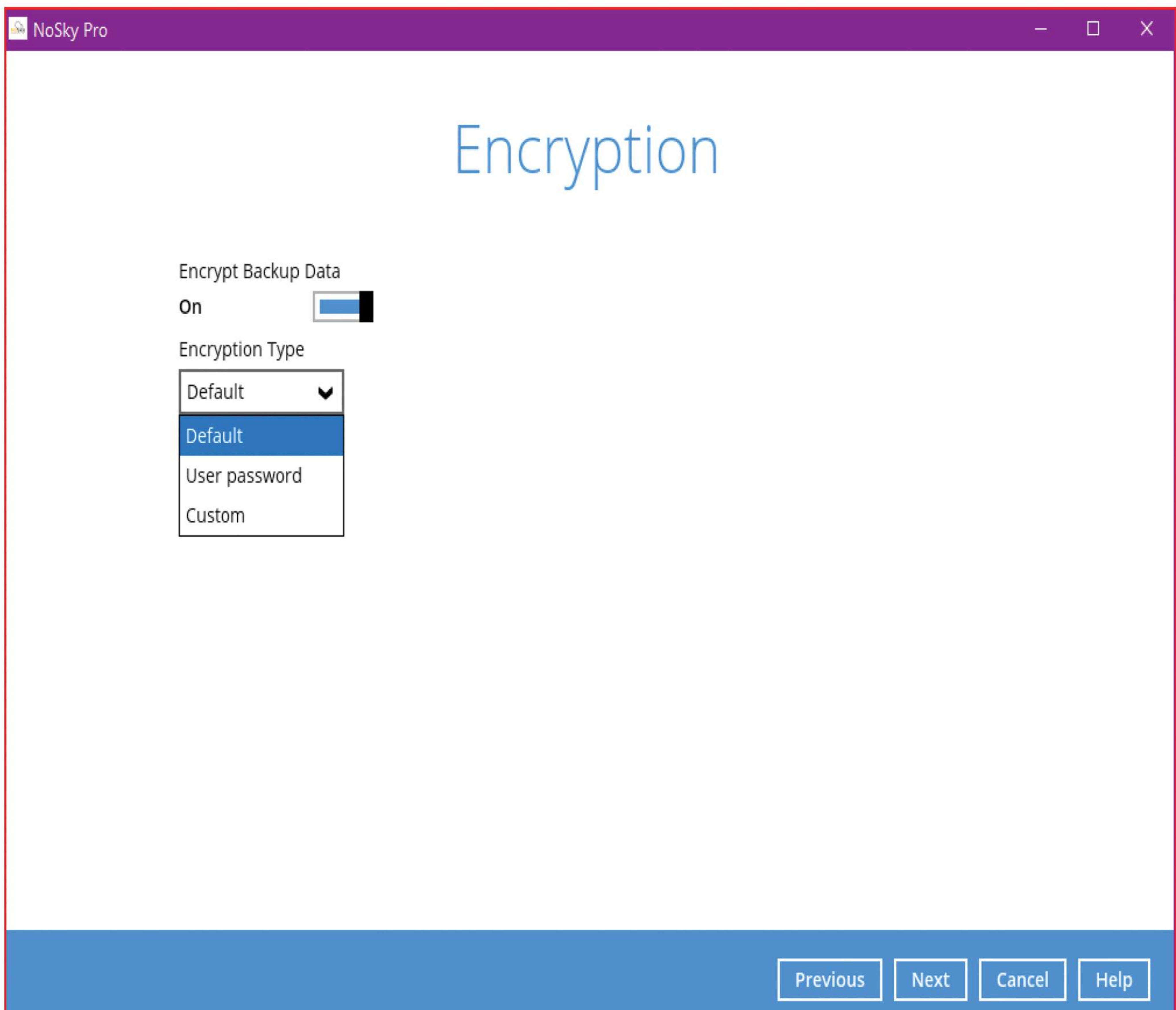
Destination storage

- India AWS (Immutable: No)
- India AWS (Immutable: No)**
- Local / Mapped Drive / Network Drive / Removable Drive

OK Cancel Help

Select Encryption type > Next

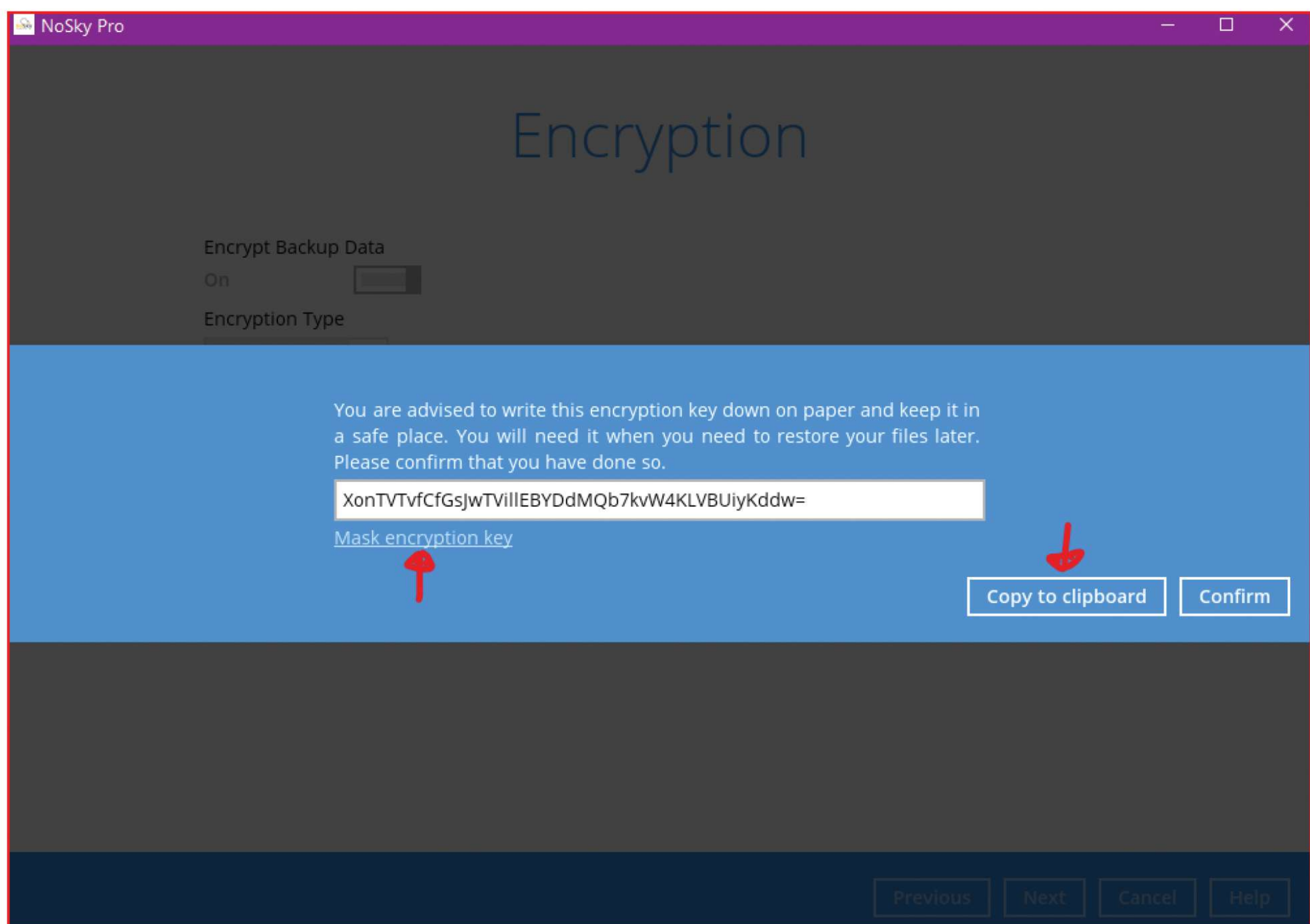
- 1- Toggle off- No Encryption key
- 2- Default- System generated key
- 3- Password- Current Password as encryption key
- 4- Custom- Create your custom encryption key



The screenshot shows the 'Encryption' settings window in NoSky Pro. The window title is 'NoSky Pro'. The main heading is 'Encryption'. Below the heading, there is a toggle for 'Encrypt Backup Data' which is currently 'On'. Underneath, there is a section for 'Encryption Type' with a dropdown menu. The dropdown menu is open, showing four options: 'Default' (selected), 'User password', and 'Custom'. At the bottom of the window, there is a blue bar containing four buttons: 'Previous', 'Next', 'Cancel', and 'Help'.

Click Unmask encryption key to view key > Copy to clipboard > STORE SAFELY

NOTE: Encryption is sole responsibility of customer & not stored on server



Click backup now to start Full Backup.

